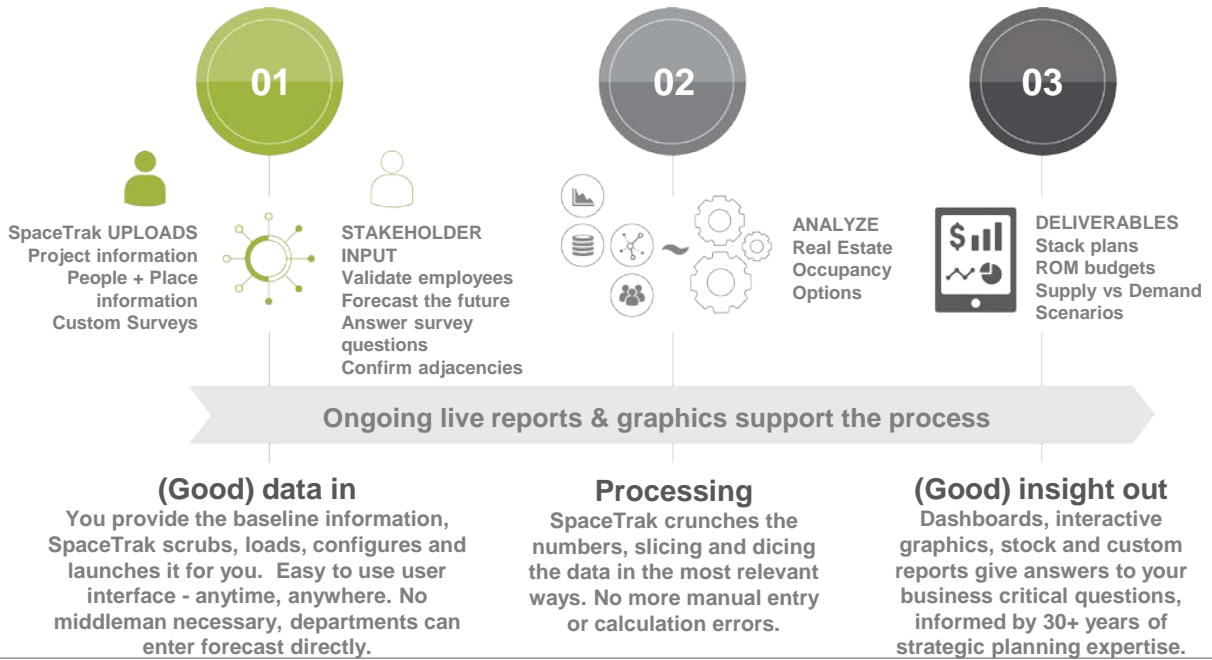


What It Does

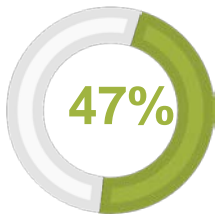
SpaceTrak radically streamlines facilities planning by automating the forecasting process, shortening the timeframe, and increasing the accuracy of information gathering for commercial real estate and architectural planning. It provides real-time business critical data and insights to help C-suite decision making.



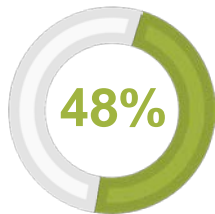
How It Works



Why You Need It



Need Improved Data Access & Quality

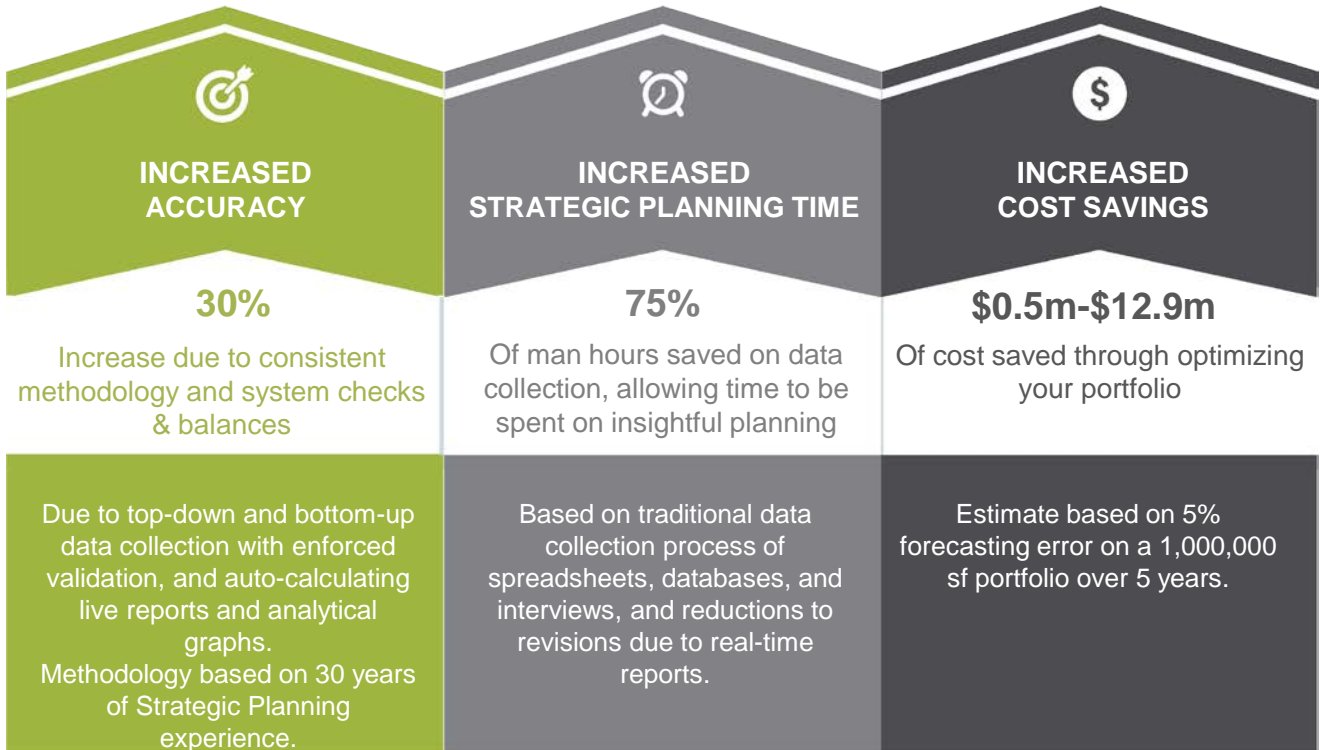


Need High Degree of Strategic Management Talent

“It is no surprise that almost half of (CRE) executives reported the need for improved data and strategic talent to help influence their enterprise discussions. Yet accessing this data and talent is challenging.”

- Occupier Survey Report 2017 - CBRE

Why It's Worth the Leap



Join the Club

of Facilities Managers, Real Estate Consultants and Architects/Designers from Organizations such as:

